

# Sydney Omega Ensemble

Eleven young, vibrant performers with a wealth of enthusiasm and musical skill, together formed the Sydney Omega Ensemble early in 2006. Now in 2007, they present what promises to be another year of outstanding chamber music of the highest calibre, under the artistic direction of clarinetist David Rowden, a former graduate of the Royal Academy of Music in London. The group has since emerged as a formidable presence within the Sydney classical music scene. Their performances have received enthusiastic acclaim from audiences and critics alike. David Vance, in his Sydney Morning Herald review of SOE's final concert of 2006, described their performance of *Inferno* by Margery Smith as "committed ensemble playing of the first rate."

Accepting an invitation from the Art Gallery of NSW, SOE will feature as part of the Resonate 07 Series in conjunction with a private viewing of the Archibald Prize. Later in October, a thrilling collaboration with international guest artist Dimitri Ashkenazy at City Recital Hall Angel Place, will feature works by Howells, Hindson, Mendelssohn and Prokofiev. In addition to these concerts, SOE have launched their first subscription series based at Paddington Uniting Church and the Independent Theatre, North Sydney.

## VENUES AND BOOKING INFORMATION:

**Paddington Uniting Church or Independent Theatre**  
City Recital Hall Angel Place Box Office  
(02) 8256 2222

[www.cityrecitalhall.com](http://www.cityrecitalhall.com)

or [www.sydneyomegaensemble.com](http://www.sydneyomegaensemble.com)

\$35 Adult / \$30 Concession / \$20 Student

### City Recital Hall Angel Place

Box Office (02) 8256 2222, [www.cityrecitalhall.com](http://www.cityrecitalhall.com)

\$45 Adult / \$40 Concession / \$25 Student

### Art Gallery Society NSW

[www.artgallery.nsw.gov.au/member/events](http://www.artgallery.nsw.gov.au/member/events)

(02) 9225 1878

\$60 Art Gallery Members / \$70 Non-members

### Joan Sutherland Performing Arts Centre (JSPAC)

Box Office (02) 4723 7600

[www.jspac.com.au](http://www.jspac.com.au)

## SOE 2007 SEASON SUBSCRIPTION PRICES:

Independent Series (3 Concerts) \$90 / \$75 / \$45

Paddington Series (4 Concerts) \$120 / \$100 / \$60

Subscriptions available in person or by phone only from City Recital Hall Box Office. Booking fees may apply.

## CONTACT SOE:

Email: [david@sydneyomegaensemble.com](mailto:david@sydneyomegaensemble.com)

Phone: 0424 224 801

# SOE

## Sydney Omega Ensemble

### 07 Season

The vibrant new  
classical sound of Sydney



For upcoming performances see inside or  
[www.sydneyomegaensemble.com](http://www.sydneyomegaensemble.com)



This project has been assisted by the Australian Government through the Australia Council, its arts funding and advisory body.



Proudly supported by





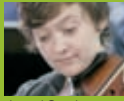
David Rowden  
Artistic Director



Kathryn Chilmald



Emily Long



Jacqui Cronin



Rowena Crouch



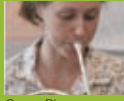
David Campbell



Emma Sholl



Shefali Pryor



Casey Rippon



Kate Golla



Matthew Ockenden

2007 SEASON

**March 4**

**March 8**

Louis Spohr  
David Pereira

Francis Poulenc

**April 29**

Darius Milhaud  
Witold Lutoslawski  
Manuel de Falla  
**Guest Artists**

**June 17**

Benjamin Britten  
Paul Witney

W.A. Mozart  
Giovanni Bottesini

**September 16**

**September 18**

Ervin Schulhoff  
George A. Palmer

Franz Schubert

**October 31**

**Guest Artist**

Herbert Howells  
Matthew Hindson

Felix Mendelssohn  
Sergei Prokofiev

**November 21**

**November 22**

**November 24**

Elena Kats-Chernin

**December 9**

**December 11**

Carl Nielsen  
Maurice Ravel  
Christopher Gordon

**Sunday 4pm**

**Thursday 7pm**

Grand Nonet  
'Nimbus'

Sextet

**Sunday 7pm**

La Création du monde  
Dance Preludes (nonet arrangement)  
Love, the Magician  
**Andrea Katz (piano)**  
**Lauren Easton (mezzo-soprano)**

**Sunday 4pm**

Oboe Quartet  
String Quartet

Piano and winds  
Duet for viola and double bass

**Sunday 4pm**

**Tuesday 7pm**

Concertino for flute, viola and double bass  
String Quintet

'Trout' Quintet

**Wednesday 7pm**

Presented in association with City Recital Hall Angel Place.

**Dimitri Ashkenazy (Clarinet) in concert with Sydney Omega Ensemble**

Rhapsodic Quintet  
Wind Quintet

Piano Sextet op 110  
Quintet, Op. 39 for oboe, clarinet, violin, viola and double bass

**Wednesday 11am**

**Thursday 11am**

**Saturday 7:30pm**

50th Birthday Celebration Concert

**Sunday 4pm**

**Tuesday 7pm**

Wind Quintet  
Introduction and Allegro for flute, clarinet, string quartet and harp.  
Chamber Symphony

**Paddington Uniting Church**

**Independent Theatre North Sydney**

New work commissioned in 2006 for SOE by  
Ars Musica Australis

**Art Gallery of New South Wales**

RESONATE 07

*The concert will be preceded by a champagne  
reception and private viewing of the Archibald Prize.  
Doors open at 7pm. Seating commences at 7.45pm.*

**Paddington Uniting Church**

New work commissioned in 2006 for SOE by  
Ars Musica Australis

**Paddington Uniting Church**

**Independent Theatre North Sydney**

New work commissioned in 2006 for SOE by  
Ars Musica Australis

**City Recital Hall Angel Place**

New work commissioned in 2006 for SOE by  
Ars Musica Australis

**Kambala Schools Concert**

**Joan Sutherland Performing Arts Centre**

**Joan Sutherland Performing Arts Centre**

A concert of Elena's chamber works including  
a new work commissioned in 2006 for SOE by  
Ars Musica Australis

**Paddington Uniting Church**

**Independent Theatre North Sydney**

New work commissioned in 2006 for SOE by  
Ars Musica Australis

Andrea Katz



Lauren Easton



Paul Witney



Dimitri Ashkenazy



Elena Kats-Chernin



Christopher Gordon

